

TECHNICAL DATA SHEET

aluLDPE regranulate

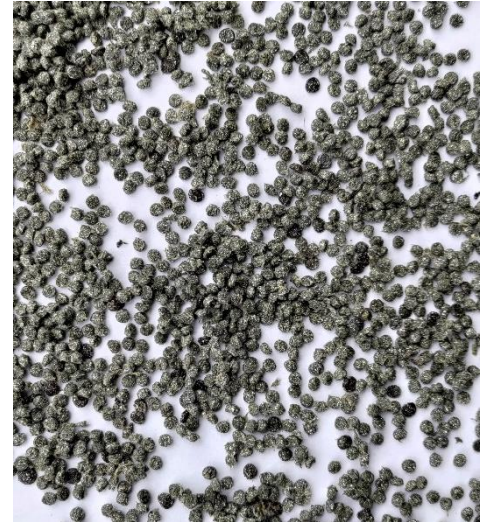
Origin: Post-consumer.
LDPE and aluminium layers from used beverage cartons (e.g. Tetra Pak, Elopak, SIG Combibloc).

Recycled content: 100%

Recycling process: Dry cleaning, sorting of foils from caps/closures and regranulation with melt filtration.

Location: Sokolov, Czech Republic

Contact: Luděk Lamich, lamich@plastigram.eu
Iren Matuška, matuska@plastigram.eu



Primary information	Indicative Value ¹	Method of measurement
Granule diameter	4 mm	
Filter size in extrusion	800 µm	
Material composition	LDPE, aluminium and traces of LLDPE, HDPE, PP	
MFI	2-3 g/10mins	ISO 1133 (190 °C; 2,16kg)
Non-combustible residue	15-18 %	600 °C, 30 min
Density	1.07 g/cm ³	Helium gas pycnometry
Smell/odour	1	Score (0 – no odour to 3 – strong odour) measured at 190°C
Young's modulus	528 ± 18 MPa	ISO 527-1
Tensile strength	13.0 ± 0.2 MPa	ISO 527-1
Elongation at break	28 ± 2 %	ISO 527-1
Impact strength	83 ± 8 kJ/m ² 57 ± 11 kJ/m ²	ISO 179, un-notched, 23 °C ISO 179, un-notched, -30 °C
Recommended processing temperature	<190 °C	

¹ Data should not be used for specification work.